



TECHNIKA

Partial shut-off damper

ASR/ASP



Description

Partial shut-off dampers are used to install a ventilation system in buildings with spiral ducts. The damper handle is made in such a way that the damper can be insulated with 50 mm mineral wool and the handle remains visible from the outside. The opening angle α of the damper can be adjusted from 0° to 90° degrees. In closed position damper always passes about 5% of the nominal air volume. Damper can be used as regulating damper as well. The position of the handle is fixed with screws.

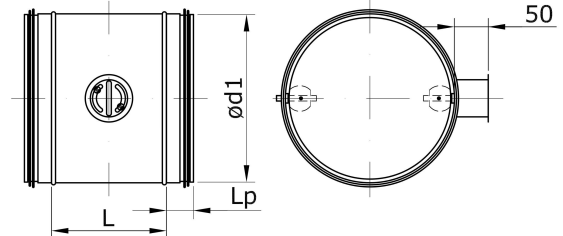
The products can be made of: galvanized steel sheet - corrosion class C3-L / C2-M; sheet with aluminium zinc coating - corrosion class C4-M / C3-H; stainless steel sheet AISI 304 (1.4301) or AISI 316L (1.4404) - corrosion class C5. Dampers is made with double seal gasket EPDM with self-slip material inside. Tightness class C according to LST EN 1506 and LST EN 12237. The dampers can be used at temperatures from -45 to +85 °C with appropriate insulation. The maximum permissible absolute humidity inside and outside the air stream is 18 g/kg.

Ordering code

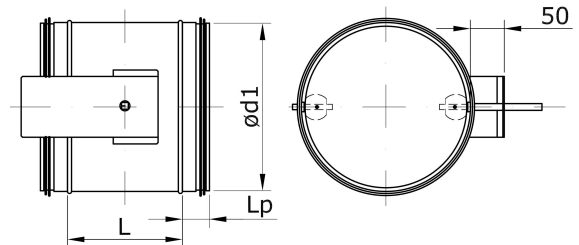
Galvanized steel - ASR200
AISI 304 - NP	
AISI 316L - 316NP	
Manual - ASR
With actuator - ASP	
Size

Dimensions

ASR



ASP



Ød1 [mm]	s [mm]	L [mm]	Lp [mm]	Mass [kg]	s _{np} [mm]	Mass _{np} [kg]
100	0,5	100	40	0,33	0,5	0,33
125	0,5	100	40	0,39	0,5	0,40
160	0,5	100	40	0,47	0,5	0,48
200	0,5	120	40	0,62	0,5	0,63
250	0,5	170	40	0,90	0,5	0,91
315	0,5	225	40	1,38	0,5	1,39
355	0,5	255	50	1,72	0,5	1,73
400	0,5	300	50	2,12	0,5	2,14
450	0,5	350	50	2,65	0,5	2,67
500	0,5	400	50	3,24	0,5	3,27
560	0,5	460	50	4,03	0,5	4,06
630	0,6	530	50	6,95	0,5	5,88

Mass_{np} – product mass made of stainless steel

Technical data	100-315	400-630
Manual damper with safety cup and handle inside	x	
The damper handle comes with an opening dial for angle adjustment	x	
The manual damper has locking screws	x	x
The manual valve has a reinforced opening mechanism, lever and axle		x
The flap of the damper is additionally stiffened		x
Shaft with continuous axle		x
The damper may be provided with an actuator mounting base plate	x	x

Sample: ASR200 – made of galvanized steel partial shut-off damper, diameter 200 mm.

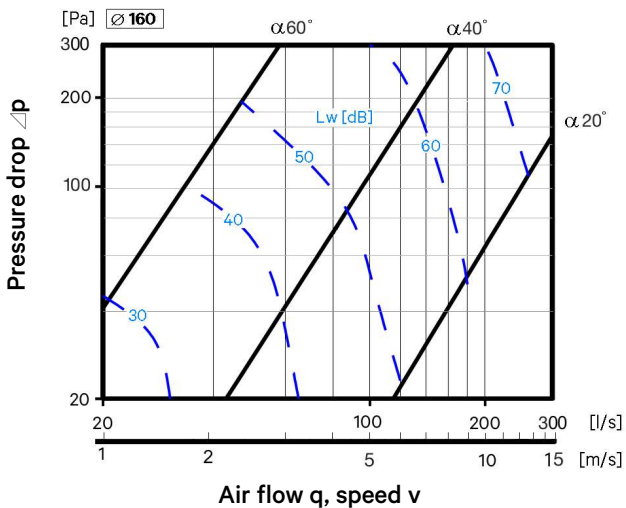
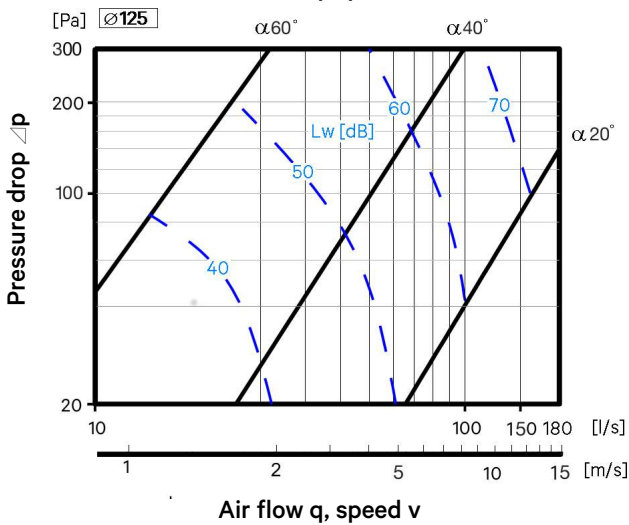
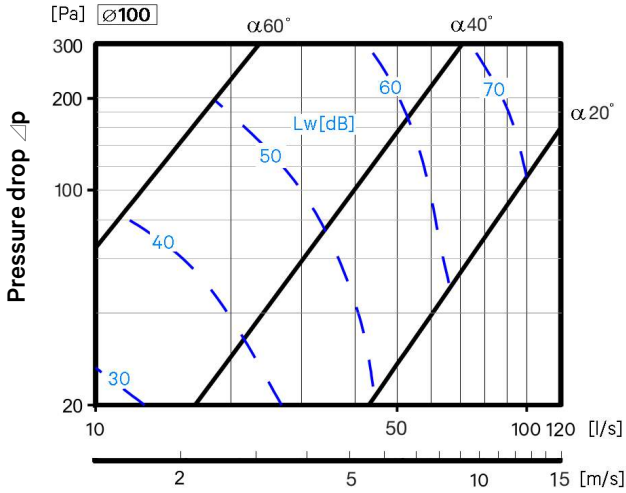


TECHNIKA

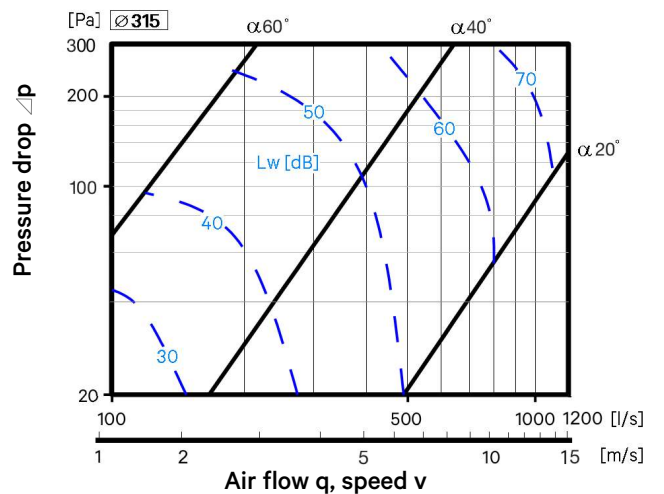
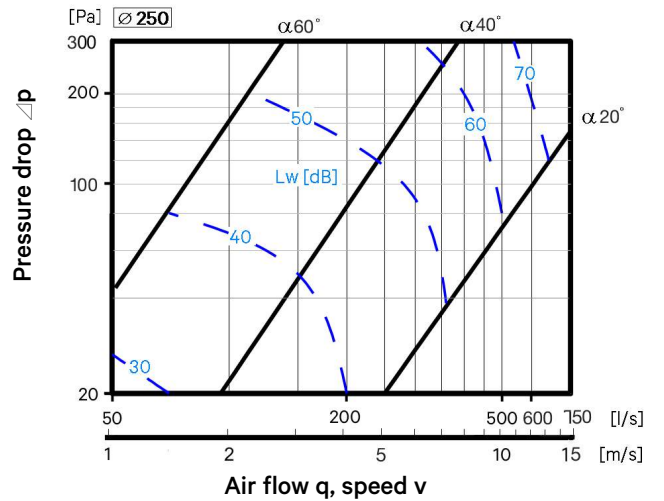
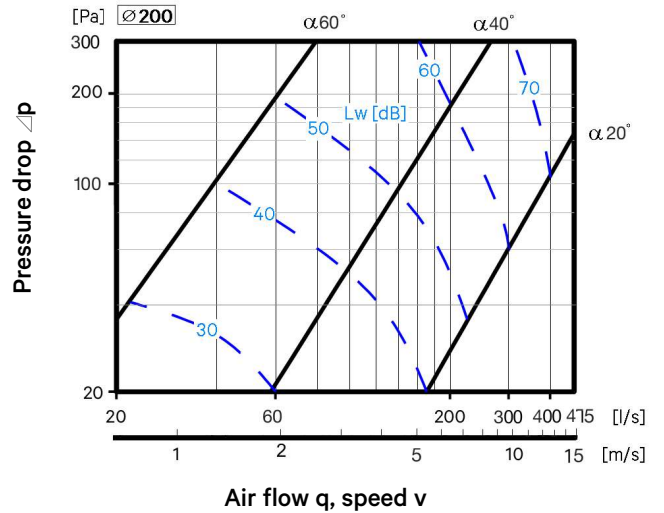
Partial shut-off dampers

ASR/ASP

Technical data



Technical data



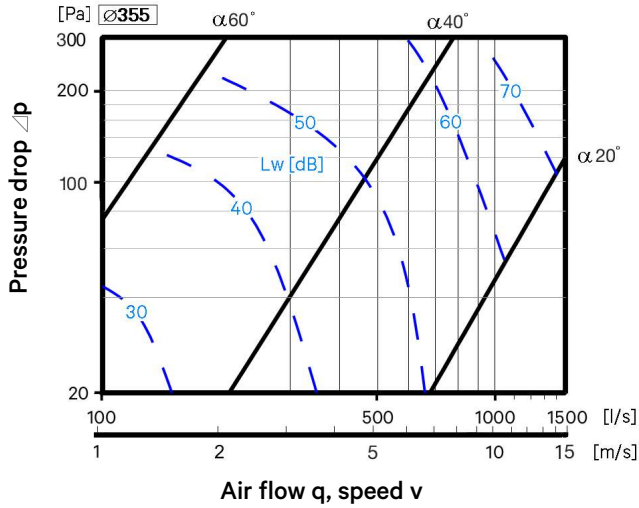


TECHNIKA

Partial shut-off damper

ASR/ASP

Technical data



Technical data

