

Circular saddles

BA



Description

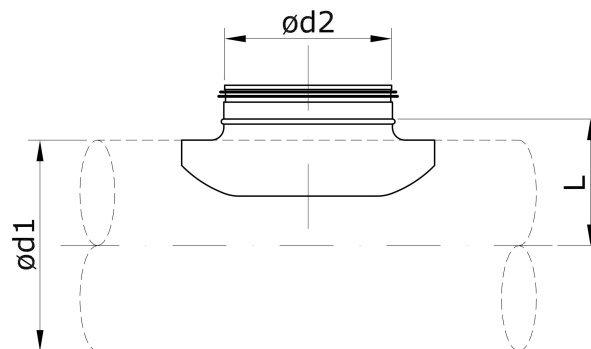
Circular pressed saddles are used to install in a ventilation system as branch in the main duct. The saddles can be connected with straight, spiral or flexible ducts. The pressed saddle has an airflow radius, which reduces pressure drop and improves airflow in the joint. Circular pressed saddles made of galvanized sheet steel with a zinc content of 275 g / m² - corrosion class C2 / C3 (L) according to LST EN ISO 12944 standard. Saddle is made with double seal gasket EPDM with self-slip material inside. Tightness class C according to LST EN 1506 and LST EN 12237. The saddle can be used at temperatures from -45 to +85 °C with appropriate insulation. The maximum permissible absolute humidity inside the air stream and outside is 18 g/kg. Saddles are produced by stamping.

Ordering code

Galvanized steel - BA160 125
Product	
Duct diameter d ₁	
Branch diameter d ₂	

Sample: BA160125 – made of galvanized steel, circular saddle for duct 160 mm, branch 125 mm.

Dimensions



Ød1 _{nom} [mm]	Ød2 _{nom} [mm]	L [mm]	Mass [kg]
100	100	65	0,18
125	100	78	0,18
	125	83	0,25
160	100	95	0,18
	125	100	0,18
	160	105	0,26
200	100	115	0,19
	125	115	0,25
	160	125	0,27
	200	125	0,39
250	100	140	0,18
	125	145	0,23
	160	150	0,24
	200	150	0,34
	250	150	0,8
315	100	173	0,12
	125	178	0,23
	160	182	0,24
	200	182	0,34
	250	182	0,71
	315	182	1,22
400	100	215	0,12
	125	220	0,23
	160	225	0,24
	200	225	0,44
	250	225	0,65
	315	225	1,03
500	100	265	0,12
	125	270	0,23
	160	275	0,25
	200	275	0,42
	250	275	0,67
	315	275	0,93