

# Circular saddle

BA



## Description

Circular saddles are used to install in a ventilation system as branch in the main duct. The saddles can be connected with straight, spiral or flexible ducts. The saddles are made with full-diameter skirts for easy installation.

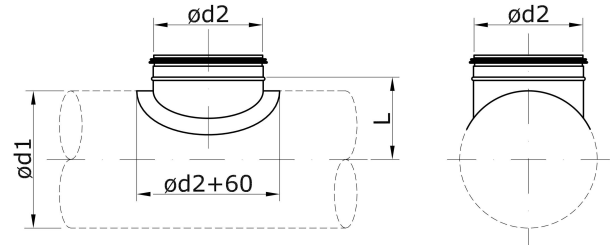
The products can be made of: galvanized steel sheet - corrosion class C3-L / C2-M; sheet with aluminium zinc coating - corrosion class C4-M / C3-H; stainless steel sheet AISI 304 (1.4301) or AISI 316L (1.4404) - corrosion class C5. Saddle is made with double seal gasket EPDM with self-slip material inside. Tightness class C according to LST EN 1506 and LST EN 12237. The saddle can be used at temperatures from -45 to +85 °C with appropriate insulation. The maximum permissible absolute humidity inside the air stream and outside is 18 g/kg. Saddles are produced by roll-forming.

## Ordering code

Galvanized steel -	..... BA630 400
AISI 304 - NP	
AISI 316L - 316NP	
Product	
Duct diameter $d_1$	
Branch diameter $d_2$	

Sample: BA630400 – made of galvanized steel circular saddle for duct 630mm, branch 400mm.

## Dimensions



Ød1 <sub>nom</sub> [mm]	Ød2 <sub>nom</sub> [mm]	L [mm]	Mass [kg]	Ød1 <sub>nom</sub> [mm]	Ød2 <sub>nom</sub> [mm]	L [mm]	Mass [kg]	
355	100	202	0,15	800	200	425	0,41	
	125	202	0,19		250	425	0,55	
	160	202	0,25		315	425	0,72	
	200	202	0,32		355	425	1,0	
	250	202	0,45		400	425	1,3	
	315	202	0,65		450	425	1,6	
355	202	0,76	500		425	1,9		
400	355	225	1,45		560	425	2,2	
	400	225	1,95		630	425	2,6	
560	100	305	0,22		900	710	425	3,3
	125	305	0,25			800	425	4,5
	160	305	0,32			315	475	0,65
	200	305	0,41	355		475	0,75	
	250	305	0,53	400		475	1,3	
	315	305	0,75	450		475	1,5	
	355	305	0,9	500		475	1,7	
	400	305	1,5	560		475	2,1	
	450	305	1,6	630		475	2,5	
	500	305	1,8	710		475	3,0	
560	305	2,3	800	475		3,9		
630	100	340	0,21	1000		900	475	5,7
	125	340	0,24		315	525	0,6	
	160	340	0,33		355	525	0,8	
	200	340	0,45		400	525	1,3	
	250	340	0,54		450	525	1,5	
	315	340	0,72		500	525	1,7	
	355	340	0,9		560	525	2,0	
	400	340	1,4		630	525	2,4	
	450	340	1,7		710	525	2,9	
	500	340	2,0		800	525	3,8	
560	340	2,4	900		525	5,1		
630	340	3,2	1000		525	8,9		
710	200	380	0,4	1250	500	650	1,5	
	250	380	0,5		560	650	1,9	
	315	380	0,7		630	650	2,3	
	355	380	0,9		710	650	2,8	
	400	380	1,4		800	650	3,5	
	450	380	1,6		900	650	4,2	
	500	380	1,8		1000	650	8,0	
	560	380	2,3		1250	650	12	
	630	380	2,8					
	710	380	3,7					

\*Product mass made of galvanized steel