

Roof hood - deflector

DEF



Description

The roof hood - deflector is used for exhaust air or fresh air above the roof, suitable for both industrial and domestic ventilation. The air is vented or drawn up and down.

NOTE! When fans are out of operation, there is always the risk that snow and rain drops can penetrate the ducts. In some cases it can also cause condensation. Biggest part of the condensate is freely drained by the outer baffle housing. The deflector can also be additionally protected by a mesh to prevent animals from entering the duct.

The products can be made of: galvanized steel sheet - corrosion class C3-L / C2-M; sheet with aluminium zinc coating - corrosion class C4-M / C3-H; stainless steel sheet AISI 304 (1.4301) or AISI 316L (1.4404) - corrosion class C5. The deflector is manufactured with an muff type connection that fits into standard ventilation ducts. The deflector can be used at temperatures from -45 to +85 °C. The maximum permissible absolute humidity inside and outside the air stream is 18 g/kg. Starting from size 500 deflector is manufactured with lifting lugs adapted for lifting and tensioning up to 1000 N.

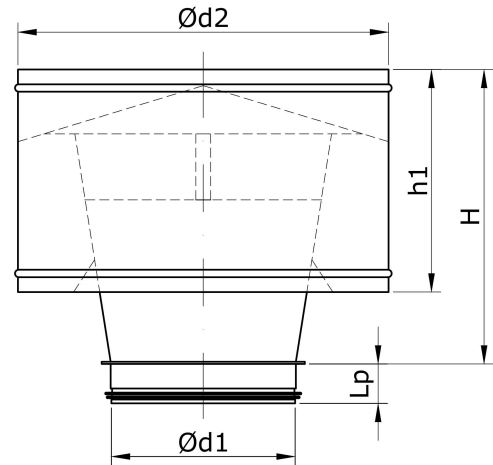
Ordering code

..... DEF200

Galvanized steel - DEF200
AISI 304 - NP	
AISI 316L - 316NP	
Product DEF200
Size	

Sample: DEF200 – made of galvanized steel circular deflector, connection diameter 200 mm.

Dimensions



Ød1 [mm]	Ød2 [mm]	H [mm]	Lp [mm]	h1 [mm]	Mass [kg]
100	200	180	40	120	0,81
125	250	225	40	150	1,43
160	320	288	40	192	2,23
200	400	360	40	240	3,21
250	500	450	40	300	4,77
315	630	567	40	378	7,34
355	710	639	50	426	9,34
400	800	720	50	480	11,6
450	900	810	50	540	14,6
500	1000	900	50	600	19,6
560	1120	1008	50	672	24
630	1260	1134	50	756	41
710	1420	1278	65	852	52
800	1600	1440	65	960	74
900	1800	1620	100	1080	105
1000	2000	1800	100	1200	153
1250	2500	2250	100	1500	245

Technical data

