

Collar on circular duct

FBA



Description

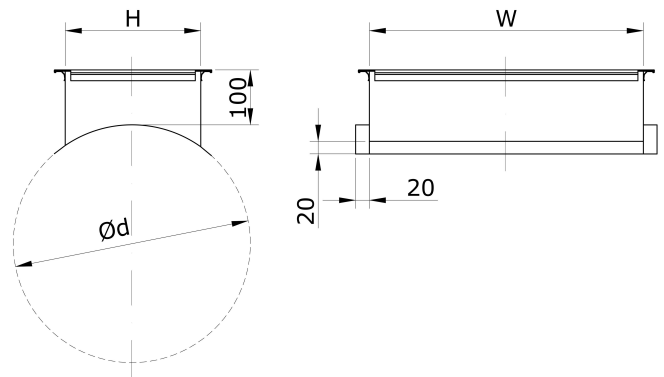
Collars are used to connect a rectangular duct to a circular duct. Screws or rivets can be used for fixing. Duct sealing must be used, which must be glued before attachment, or sealed. The products can be made of: galvanized steel sheet - corrosion class C3-L / C2-M; sheet with aluminium zinc coating - corrosion class C4-M / C3-H; stainless steel sheet AISI 304 (1.4301) or AISI 316L (1.4404) - corrosion class C5. Standard collar joint tightness class B according to LST EN 1507. Products of higher C tightness class are also available on request. Collars can be used at temperatures from -45 to +85 ° C with appropriate insulation. The maximum permissible absolute humidity inside the air stream and outside is 18 g / kg. Protective films, that ensure cleanliness, are placed at the customer's request when ordering. For other dimensions and materials, please contact UAB „MKTechnika“ sales offices.

Ordering code

..... FBA500300/d630
Galvanized steel -
AISI 304 - NP
AISI 316L - 316NP
Product
Size
Duct dimension

Sample: FBA500300/d630 – made of galvanized steel sheet collar, dimension WxH- 500x300 mm on the duct 630 mm.

Dimensions



	W [mm]	H [mm]
Minimum dimension	100	100
Maximum standard dimension	2100	2100
Flange F20	Up to 1499	Up to 1499
Flange F30	1500-2100	1500-2100

Technical data

Flanges come with a sealing gel. The gel meets the requirements of VDI 6022 standard.

Weight formula, kg (galvanized steel)	W [mm]	H [mm]
$m[\text{kg}] = 2,2 * (W[\text{m}] + H[\text{m}])$	Up to 1000	Up to 1000
$m[\text{kg}] = 2,4 * (W[\text{m}] + H[\text{m}])$	From 1001 up to 1400	From 1001 up to 1400
$m[\text{kg}] = 2,8 * (W[\text{m}] + H[\text{m}])$	From 1401 up to 2100	From 1401 up to 2100