

Cross

KRT



Description

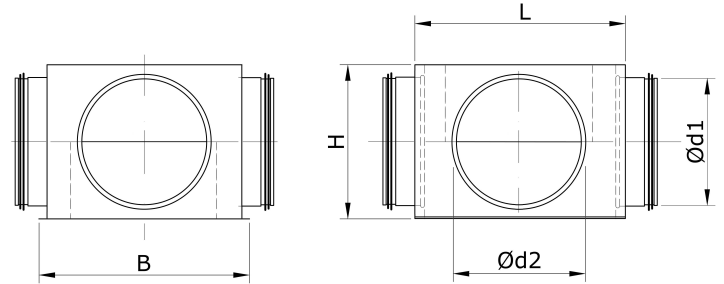
Cross KRT boxes are used when the ducts of individual streams (of the same or different diameters) intersect perpendicularly and there is no possibility to reduce the height of the ventilation system. This type of junction is intended for use only in round duct ventilation systems. The different air flows in the junction are separated with insulation material, so they are perfect even in cases where "warm" and "cold" air flows collide, without creating the possibility of condensation. The products can be made of: galvanized steel sheet - corrosion class C3-L / C2-M; sheet with aluminium zinc coating - corrosion class C4-M / C3-H; stainless steel sheet AISI 304 (1.4301) or AISI 316L (1.4404) - corrosion class C5. Cross box is made with double seal gasket EPDM with self-slip material inside. Tightness class C according to LST EN 1506 and LST EN 12237. The cross box can be used at temperatures from -45 to +85 °C with appropriate insulation.

Ordering code

Galvanized steel - KRT200160
AISI 304 - NP	
AISI 316L - 316NP KRT200160
Aluminium zinc - AZ	
Product KRT200160
1 duct dimension, mm KRT200160
2 duct dimension, mm KRT200160

Sample: KRT200160 – made of galvanized steel, cross for the ducts 200 mm and 160 mm.

Dimensions



Ød1 [mm]	Ød2 [mm]	B [mm]	H [mm]	L [mm]	Graph curve		Mass [kg]
					Ød1	Ød2	
100	100	307	128	290	A	A	2,0
125	100	372	152	355	A	A	3,2
125	125				A	A	3,2
160	100	447	188	430	B	C	4,3
160	125				B	C	4,3
160	160				B	B	4,4
200	100	355	230	340	C	D	2,6
200	125				C	C	5,9
200	160	537	228	520	C	C	5,9
200	200				B	B	6,0
250	100	400	284	382	C	D	3,6
250	125				C	D	3,8
250	160	657	278	640	C	C	8,2
250	200				C	C	8,3
250	250				C	C	8,4
315	160	480	344	465	C	D	5,5
315	200	787	344	770	C	C	12,2
315	250				C	C	12,3
315	315				C	C	12,5

Technical data

