

# Channel

# TPU



## Description

The TPU profile is used for fastening ventilation ducts, communications and other elements. The profiles are fastened with studs to the ceiling or other supporting structural elements. These profiles can be used to prepare supporting structures inside the building. The fastening profile is made of galvanized sheet steel with a zinc content of 200-275 g/m<sup>2</sup> - corrosion class C2-M/C3-L according to LST EN ISO 12944 standard.

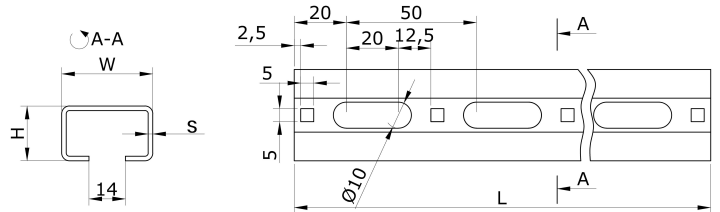
## Ordering code

TPU35-21-2,0

Product  
Dimensions

Sample: TPU35-21-2,0 – made of galvanized steel U profile, thickness 2,0 mm, dimensions WxH – 35x21 mm.

## Dimensions

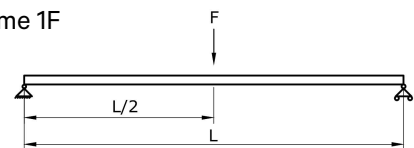


Type	W [mm]	H [mm]	S [mm]	L [mm]	Mass [kg/m]
TPU35-21-2,0	35	21	2,0	2000	1,2

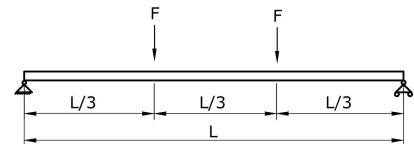
## Technical data

Distance between hanging support L, mm	Allowable load F (N), at different load schemes			
	Scheme 1F	Scheme 2F	Scheme 3F	Scheme q
400	1880	1120	800	3050
600	845	495	355	1350
800	475	280	199	750
1000	300	180	125	480
1400	150	90	65	250
1600	115	70	50	190
1800	92	55	39	160
2000	74	45	34	130

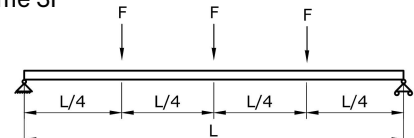
### Loading scheme 1F



### Loading scheme 2F



### Loading scheme 3F



### Loading scheme q

