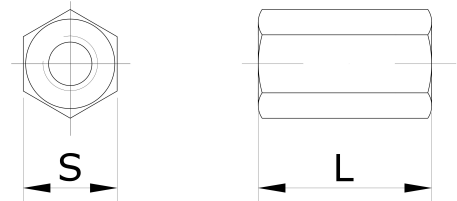


Nut connector

VJ



Dimensions



Type	Ød [mm]	L [mm]	Mass [kg/100piece]	Allowable load [kN]
VJ8	8	24	1,71	15

Description

The nut connector VJ8 is used to connect the two ends of the threaded rod. When connecting, maintain a required screw depth to achieve maximum thread holding strength. The connector is used when it is not enough to hang the system on a continuous 2m or 3m threaded rod. Made of steel, zinc coated.

Ordering code

VJ8

Product