

# Backdraught valve

VOZT



## Description

The backdraught valve is used to install a ventilation system in buildings with spiral or smooth ducts. The valve controls the flow of air through the duct. Air flow can only move in one direction. When moving backwards, the blades close and do not allow air and noise to pass. Blades by their own weight close the valve when airflow is absent or on the opposite side. This type of valve can also be used in a system to prevent overpressure in the ducts.

The valve body is made of aluminium and galvanized sheet steel with a zinc content of 275 g/m<sup>2</sup> - corrosion class C2/C3 (L) according to LST EN ISO 12944 standard. The valve blades are made of a galvanized steel. The backdraught valve can be used at temperatures between -45 °C and + 100 °C with appropriate insulation in combination with the duct system. The maximum permissible absolute humidity inside and outside the air stream is 18 g / kg.

## Ordering code

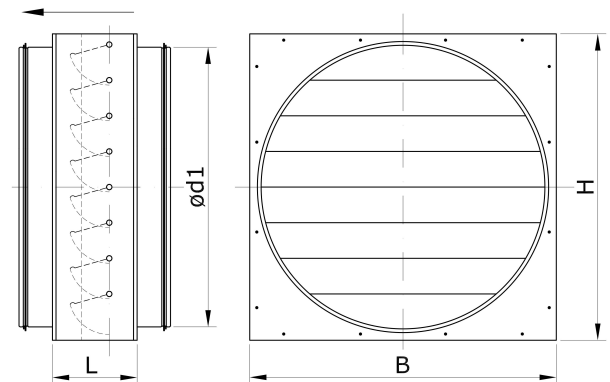
VOZT-630

Product

Size

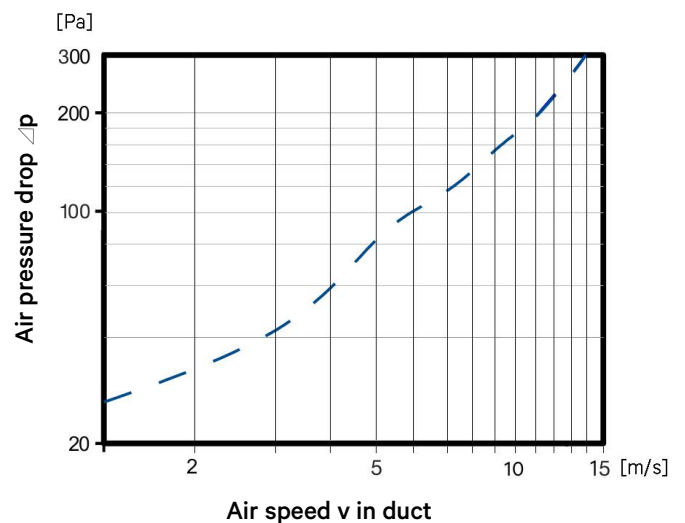
## Dimensions

Air direction



Ød1 <sub>nom.</sub> [mm]	L [mm]	B [mm]	H [mm]	Mass [kg]
400	190	460	460	5,45
450	190	500	500	5,45
500	190	560	560	6,25
560	190	620	620	7,10
630	190	680	680	8,9
710	190	760	760	11,5
800	190	860	860	13,5
900	190	960	960	17,5
1000	190	1060	1060	24,0
1250	190	1320	1320	34,0

## Technical data



Sample: VOZT-630 – circular backdraught valve, diameter 630 mm, in rectangular casing 680x680 mm.